

Bonreal Hotel (Xichang Qionghai Bay)

邛海湾柏樾酒店

Address: Qionghai Bay, South Road of Haibin Avenue, Xichang, Sichuan, China

I. Hotel Introduction 酒店介绍

Embraced by Qionghai Lake and Lushan Mountain, Bonreal Hotel (Xichang Qionghai Bay) tactfully merges the view of lake and mountain into a coherent whole while still preserving their individual characters. The front of the hotel faces the magnificent Lushan Mountain, whereas the outdoors sits by the tranquil Qionghai Lake. When entering the lobby that themes migratory birds and leads you to the outdoors, you would feel the leisurely holiday ambiance: waterfront landscape extending to the interior, outdoors melting into Qionghai softly, and the sea stretching and joining the sky on the horizon. The U shape of the building maximizes the view of each room, and no matter which room you are in, with the scattered space structure, you could always see the scenery. All restaurants & bars, ballroom and meeting rooms face Qionghai. While you are dining, drinking or in a meeting, you would feel the splendor of the natural ecology in the picturesque scenery. The Wetland Park, the Palm Beach, the Wedding Square, the Star Theatre, the Swimming Pool, the Marina, the Flower Corridors, and the Style Commercial Street--- all smoothly connected by the bicycle tour road, composing an exquisite lakeside recreation zone. Whatever you imagine about a vacation, you may find the perfect answer beneath the moon of Qionghai Bay.

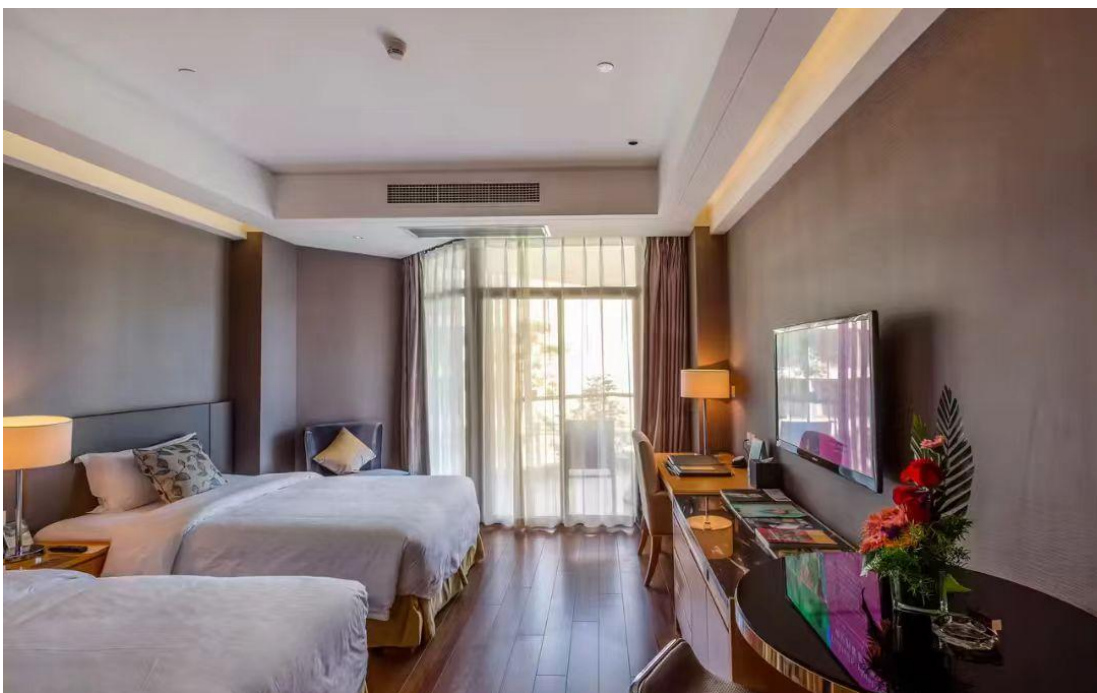
西昌邛海湾柏樾酒店坐邛海拥泸山，将山水合二为一又各具特色。临泸山的酒店前区呼应山之巍壮，用材疏淡，宽阔大气；临邛海的酒店后区与前区轴线分明，轮廓优雅，只随风月悠远，自然清寂。酒店大堂内饰以候鸟为主题，景观水池与邛海海面自然相接，临海景观延伸到室内，步入大堂便感受到水天一色的休闲度假氛围。酒店U字型的布局最大限度为房间敞宽视野，空间上采用错落式结构，无论在哪个房间，都能看到山水风景。临海景观面均为餐厅、烧烤吧、酒吧、宴会厅和会议室，在享用美食美酒、宴席或举办会议的同时还能欣赏到美丽的邛海景观。湿地公园、棕榈沙滩、婚庆草坪、星光影院、无边泳池、游艇码头、海景栈道、三角梅花廊、风情商业街……与自行车游览道柔合，形成曲径通幽、移步异景的湖滨度假区。生态度假旅游所能让您想到的一切，您都会在邛海湾的月光下找到最完美的解答。



II. Room 客房

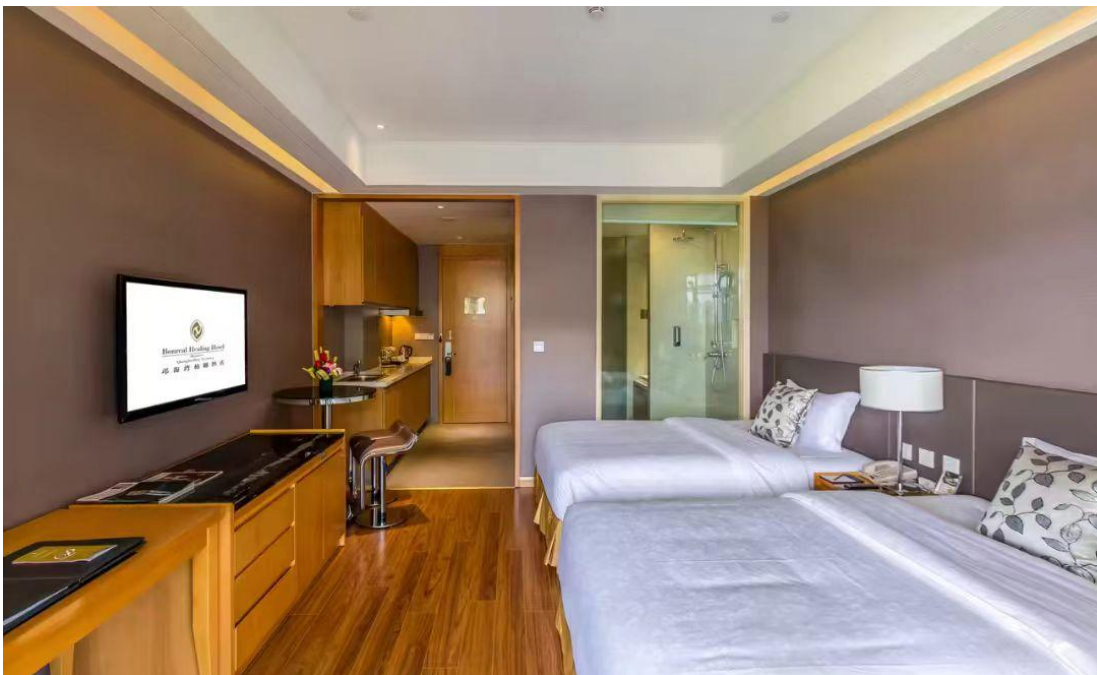
2.1 Superior Room with 2 Double Beds (1.3*2.0m), Garden-view (Apartment Building), CNY 450/night

公寓高级园景双床房，450 元/晚（2 张床，1.3*2.0 米）



**2.2 Superior Room with 2 Double Beds (1.3*2.0m), Sea-view
(Apartment Building), CNY 500/night**

公寓高级海景双床房，500 元/晚（2 张床，1.3*2.0 米）



**2.3 Superior Room with 2 Double Beds (1.3*2.0m), Garden-view, CNY
550/night**

酒店高级园景双床房，550 元/晚（2 张床，1.3*2.0 米）



**2.4 Superior Room with 1 King Bed (1.8*2.0m), Garden-view, CNY
550/night**

酒店高级园景大床房，550 元/晚（1 张床，1.8*2.0 米）



**2.5 Superior Room with 2 Double Beds (1.3*2.0m), Sea-view, CNY
700/night**

酒店高级海景双床房，700 元/晚（2 张床，1.3*2.0 米）



**2.6 Superior Room with 1 King Bed (1.8*2.0m), Sea-view, CNY
700/night**

酒店高级海景大床房，700 元/晚（1 张床，1.8*2.0 米）



**2.7 Deluxe Room with 2 Double Beds (1.3*2.0m), Sea-view, CNY
800/night**

酒店豪华海景双床房，800 元/晚（2 张床，1.3*2.0 米）



**2.8 Deluxe Room with 1 King Bed (1.8*2.0m), Sea-view, CNY
800/night**

酒店豪华海景大床房，800 元/晚（1 张床，1.8*2.0 米）



III. Food & Beverage And Recreation 餐饮及休闲

3.1 Lobby lounge 大堂吧

The elegant lobby lounge diffuses an intense subtropical aura. Daily afternoon tea offers you various kinds of refreshments: tea, fruit juice, cocktails. It is an ideal place for you to unwind.

简约典雅的亚热带风情，每日下午茶为您提供各式美味小点、茶、果汁、鸡尾酒，尽享轻松愉悦好心情。



3.2 Moon Bar 月窗

The wine bar has a transparent round body design, as if you are in the deep sea, presenting fine wines and cigars from all over the world.

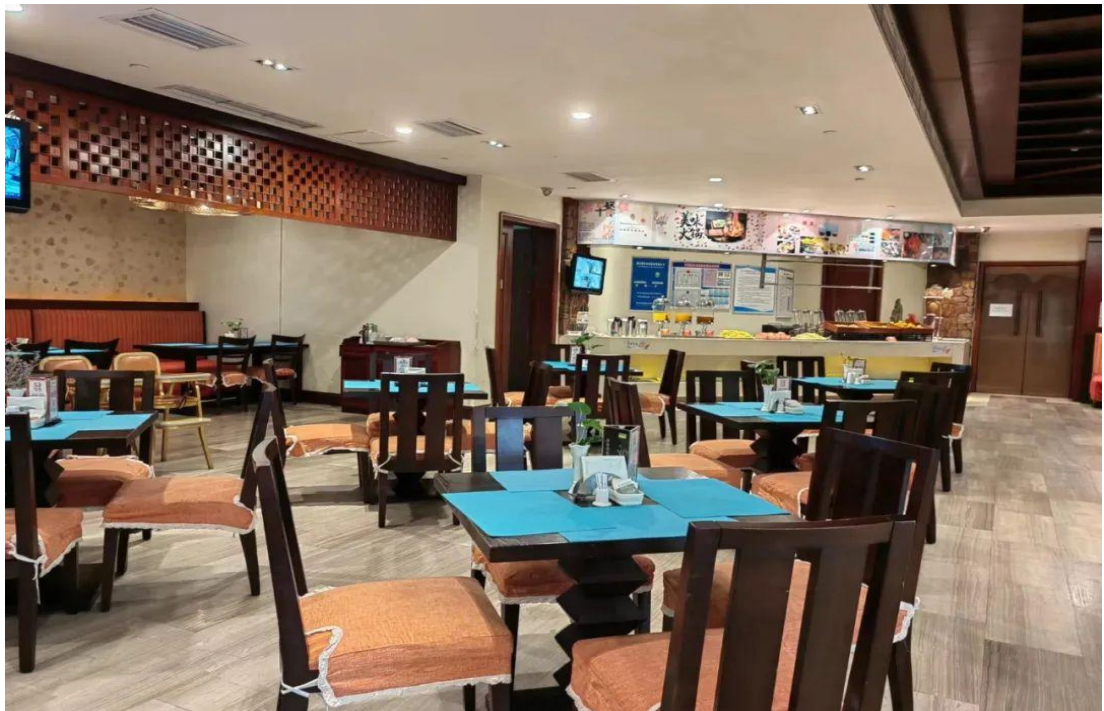
全透明圆体设计的红酒吧仿佛置身静谧的海洋中，带来世界各地的醇酒名酿和精选雪茄。



3.3 Cafe & Restaurant 咖啡厅&西餐厅

The all-day-dining restaurant with tropical atmosphere presents you authentic Southeast Asian cuisine and food collections all over the world.

尽显热带沙滩风情的全日制餐厅呈献地道的东南亚料理和世界美食，带给您时尚健康、美味精致的饮食新体验。



3.4 Chinese Restaurant 中餐厅

The Chinese restaurant features a fusion design of French court and pastoral. The master chefs present you the fine flavors from Sichuan, Guangdong, Xichang and etc. 17 private rooms in all.

法式宫廷田园风设计的中餐厅，金牌大厨悉心烹饪新派健康营养川菜、粤菜。



3.5 Barbecue Bar 烧烤吧

Enjoy BBQ, selected beer, outdoor movie under moon and stars. A marvelous relaxation could not be better.

地道的邛海风味，湖边畅享烧烤啤酒、露天电影、赏星月，自在惬意至极。



3.6 Recreation 休闲

Games room, Spa, KTV, club, boutique, gym, squash tennis, marina, palm beach (barbecue and volleyball), bougainvillea gallery, wetland park, edge-free swimming pool, wedding square, bicycle tour road, panoramic sea-view trestle, stylish commercial street. All hugged by an eyeful of greenness and immersed in the breath of nature.

棋牌室、Spa、KTV、会所、精品店、健身房、壁球场、游艇码头、棕榈沙滩（烧烤、排球）、三角梅花廊、湿地公园、无边泳池、婚庆广场、自行车游览道、全海景栈道、风情商业街满眼的绿意与您相拥。



西昌邛海湾柏樾度假酒店

