

Qionghai Hotel 邛海宾馆

Address: No. 115 Haibin Middle Road, Xichang, Sichuan, China

I. Hotel Introduction 酒店介绍

The hotel is located in the Qianhai National Tourism Resort, facing a lake on one side and a mountain on the other. The hotel covers an area of more than 120 thousand square meters, with a construction area of 80000 square meters, a garden-style layout, and buildings distributed in village-style. The hotel is blessed with the all-year-spring weather of Xichang, and the unique embrace of Qionghai lake and the Lushan Mountain. You can feel the mountains, the lake and the sun simultaneously without stepping out of the hotel. The hotel now has 18 separate buildings in different styles, 450 rooms offering nearly 600 beds including sea-view suites, sea-views large / double beds, smart guest-controlled rooms and more. There are 25 large and small restaurants which can accommodate 1500 people at the same time. There are 22 conference rooms of various types, which can accommodate 3,000 people at once. It is an invaluable integrated government affair\business\family resort hotel that combines accommodation, catering, meeting, travel, shopping and entertainment.

邛海宾馆坐落于邛海国家级旅游度假区，一面临湖、一面靠山。酒店占地面积 12 万多平方米，建筑面积 8 万平方米，花园式格局，建筑成别墅式分布，得西昌春天栖息之天时，邛泸山水相依之地利，可谓得天独厚。不出酒店就可以感受山、湖、阳光，酒店现拥有 18 栋不同风格的独立建筑，450 间客房，可提供海景套房、海景大床/双床房、智能客控房等床位近 600 个；大小餐厅 25 个，可同时容纳 1500 人进餐；各类会议室 22 个，可同时提供 3000 人会议。是不可多得的集房、餐、会、游、购、娱为一体的政务、商务、亲子综合型度假酒店。



II. Room 客房

2.1 Business Standard Room with 2 Twin Beds (1.2*2.0 m), CNY

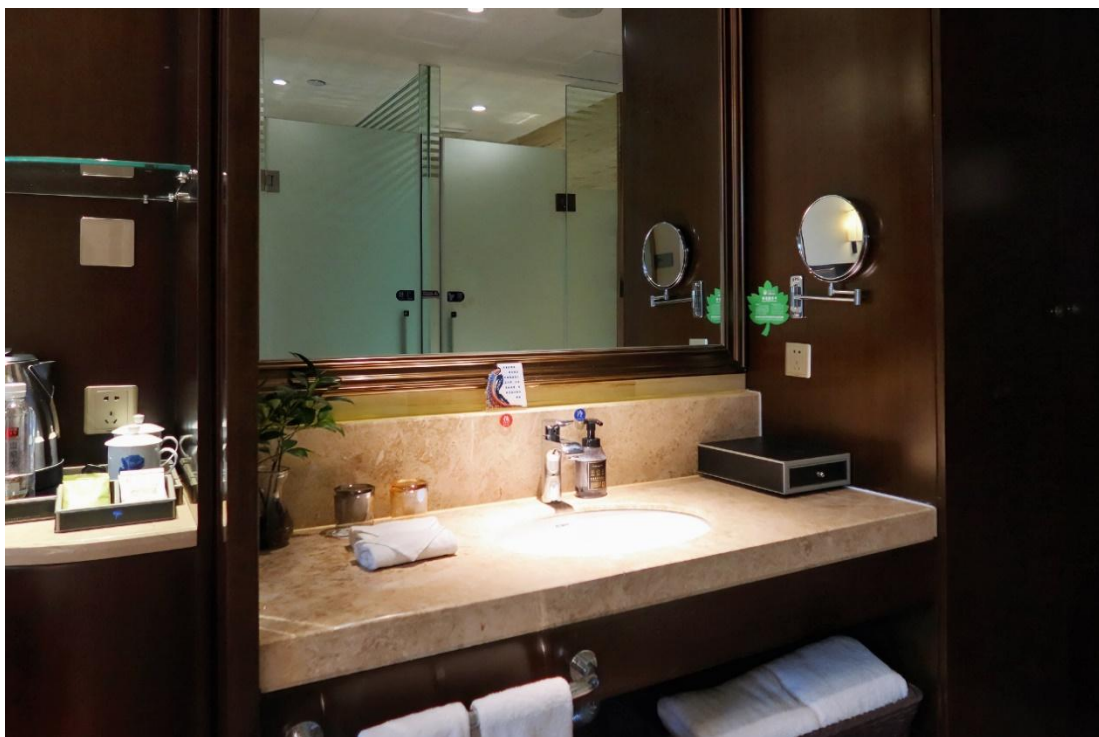
360/night

商务双床房，360 元/晚（2 张床，1.2*2.0 米）



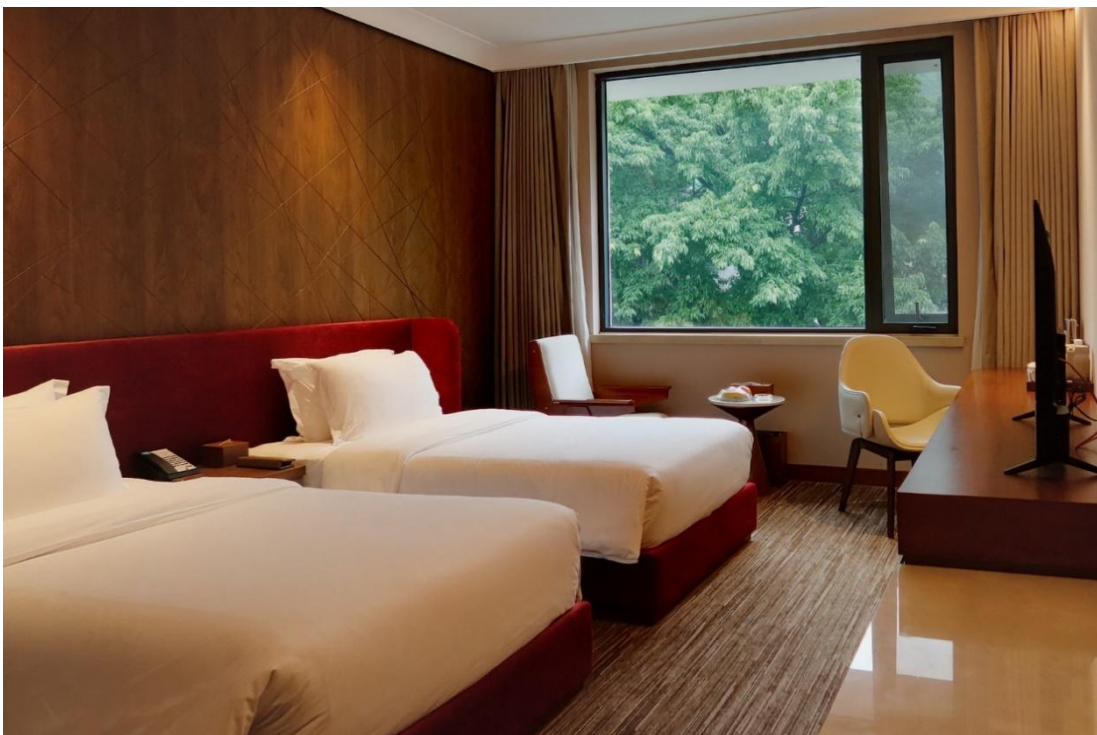
2.2 Single Room with 1 Queen Bed (1.5*2.0 m), CNY 360/night

商务单人间，360 元/晚（1 张床，1.5*2.0 米）



2.3 Standard Room with 2 Twin Beds (1.2*2.0 m), CNY 480/night

舒适双床房，480 元/晚（2 张床，1.2*2.0 米）



2.4 Room with 1 King Bed (1.8*2.0 m), CNY 480/night

舒适大床房，480 元/晚（1 张床，1.8*2.0 米）



**2.5 Mountain-view Room with 2 Double Beds (1.35*2.0 m), CNY
550/night**

山景双床房，550 元/晚（2 张床，1.35*2.0 米）



2.6 Mountain-view Room with 1 King Bed (1.8*2.0 m), CNY 550/night

山景大床房，550 元/晚（1 张床，1.8*2.0 米）



2.7 Garden-view Room with 1 King Bed (1.8*2.0 m), CNY 780/night

园景大床房，780 元/晚（1 张床，1.8*2.0 米）



2.8 Sea-view Room with 2 Double Beds (1.35*2.0 m), CNY 980/night

海景双床房，980 元/晚（2 张床，1.35*2.0 米）



2.9 Sea-view Room with 1 King Bed (1.8*2.0 m), CNY 980/night

海景大床房，980 元/晚（1 张床，1.8*2.0 米）



2.10 Terrace Room with 2 Double Beds (1.35*2.0 m), CNY 980/night

露台双床房，980 元/晚（2 张床，1.35*2.0 米）



2.11 Terrace Room with 1 King Bed (1.8*2.0 m), CNY 980/night

露台大床房，980 元/晚（1 张床，1.8*2.0 米）



III. Food & Beverage And Recreation 餐饮及休闲

3.1 Yu Ou Restaurant 玉鸥楼宴会厅

The new seaside banquet hall, which can accommodate 700 people at once, offers a taste of "eat natural and savor nature." With all ingredients sourced from a natural, non-polluting site, the restaurant offers guests "dedicated venue, attentive service, and ultimate experience" at the same time.

全新海景宴会厅,可同时容纳700人用餐,在餐厅您能感受到“食天然 品自然”的用心美味,所有食材均采自天然无污染基地,向宾客提供“专属场地+精心服务+极致体验”。

3.2 Ying Tao Restaurant 映涛楼海景餐厅

Overlooking the 270 ° sea view, backed by the Lushan Mountains, surrounded by the blue waters of the Qionghai Lake on one side and the lush and dim mountains on the other, the restaurant is a perfect venue for a fine symphony composed by food and taste buds.

270°海景俯瞰,背靠庐山,一边是碧波荡漾的邛海、一边是葱翠朦胧的远山,舒适宜人的装修格调,是美食与味蕾一起演奏出优美交响乐的绝佳场地。

3.3 Jin Shan Cafeteria 近山自助餐厅

The Jin Shan cafeteria can accommodate about 200 people at once, offering a comfortable environment with fresh ingredients, sophisticated cuisine and a wide variety of dishes.

近山自助餐厅可同时容纳约200人就餐,环境舒适,食材新鲜、菜品精致且种类丰富。



3.4 Western Restaurant 云水间 | 湖畔西餐

3.5 Black Swan Coffee 黑天鹅咖啡馆





3.6 Lake Square 湖畔广场

Located in an open-air square in the central area of the Hotel, adjacent to the Qionghai Lake, surrounded by mountains and water, the Lake Square mainly provides coffee, tea stands, barbecues, night beer and local snacks.

位于邛海宾馆中心地带的露天广场，毗邻邛海，依山傍水，主要经营咖啡、茶座、烧烤、夜啤酒、本地小吃。



3.7 Recreation 休闲



